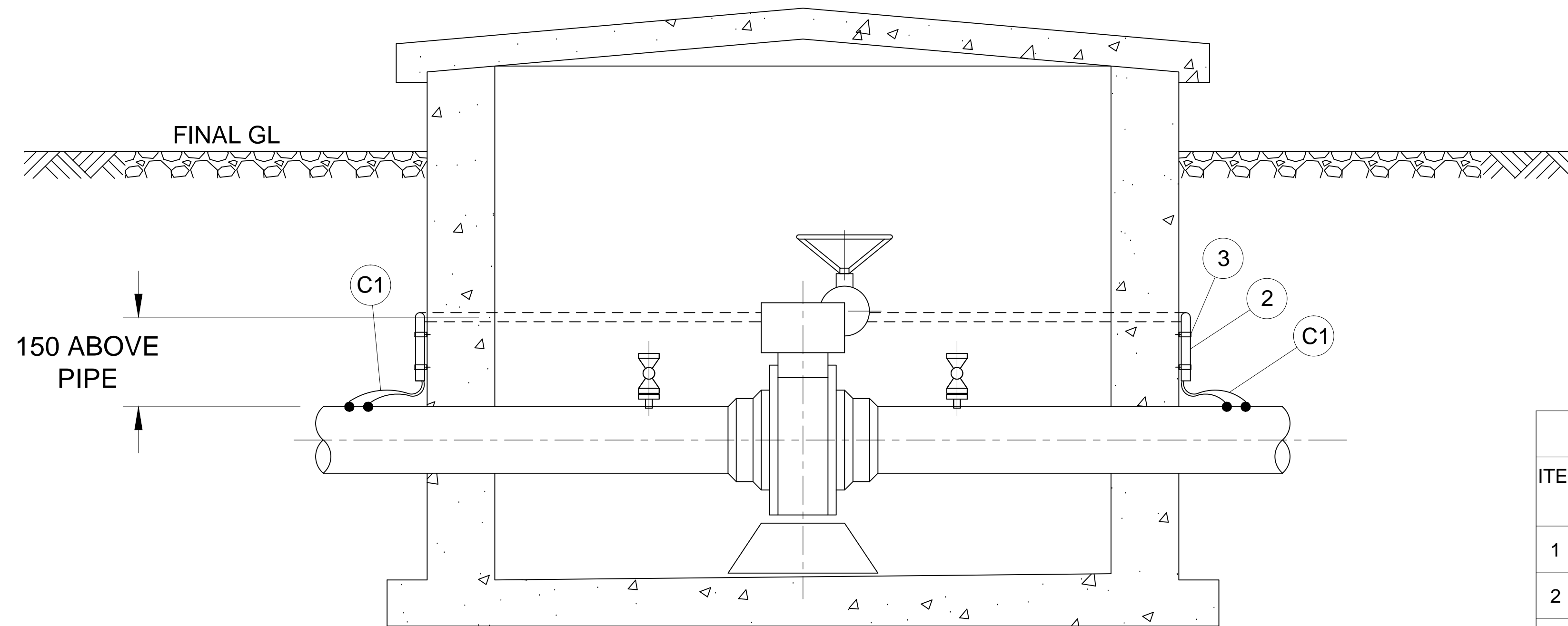
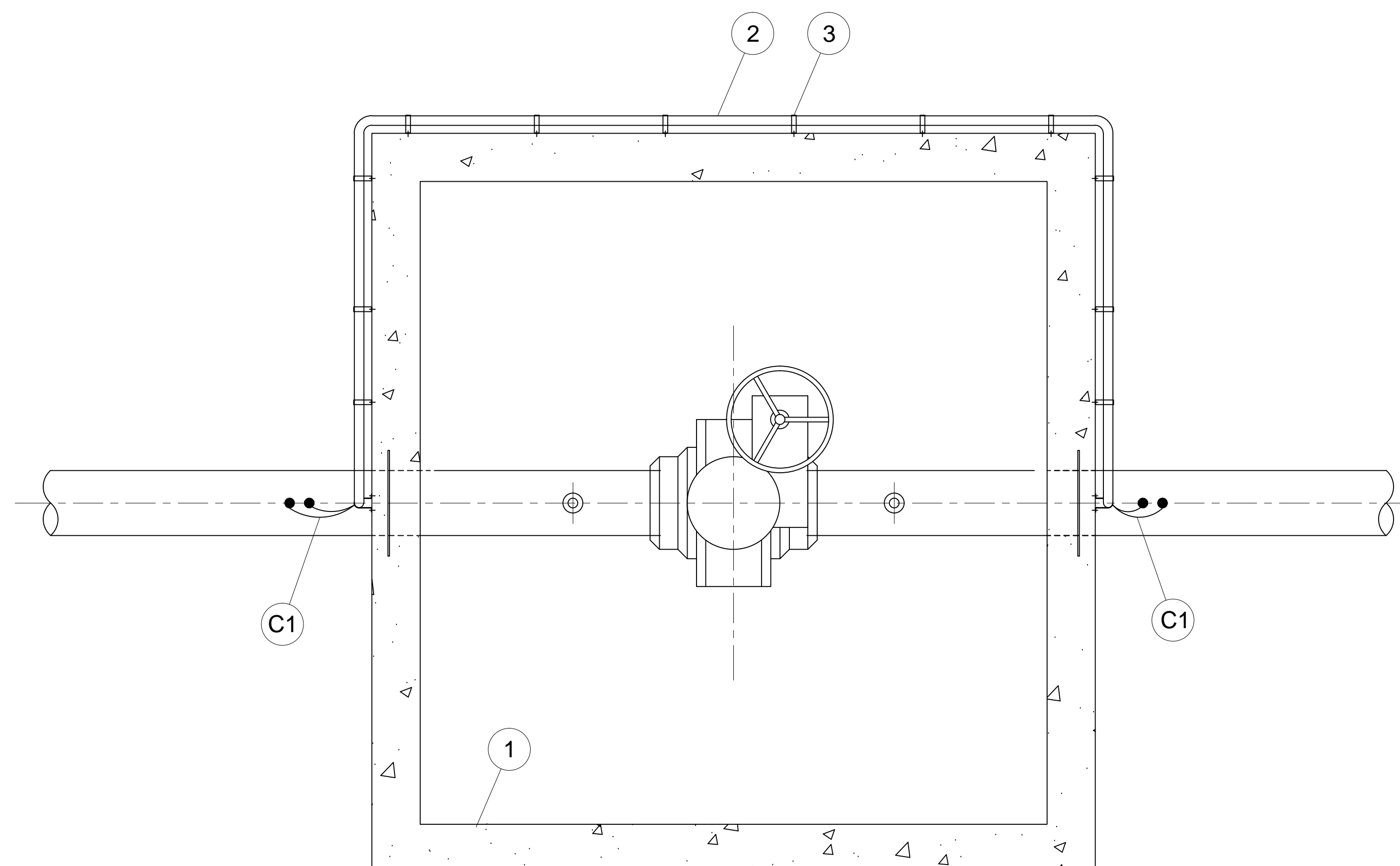


1. HDPE CONDUIT TO BE INSTALLED
2. SADDLES REQUIRED AT EITHER END OF EACH CONDUIT LENGTH AS WELL AS EVERY 30cm IN BETWEEN.



SECTIONAL ELEVATION

MATERIALS LIST			
ITEM	QTY.	DESCRIPTION	MATERIAL / REFERENCE
1	1	VALVE CHAMBER	CONCRETE
2	1	CONDUIT Ø40mm (LENGTH TO SUIT)	HDPE
3	AS REQ'D	SADDLE CLAMPS	STEEL



PLAN VIEW
(ROOF NOT SHOWN FOR CLARITY)

Cable Schedule & Material Description										
Item	Qty.	Length of Each	Cable Service	Cable Description					Material	
				Core mm2	Core Qty.	Strand Type	Colour			
		As Req'd					Body	Core	Core	Insulation
C1	2		Continuity	10	1	Multi	Black		Copper	PVC/PVC

NOTE: CONTINUITY BOND TO BE INSTALLED OUTSIDE THE CHAMBER

[illegible]

Client


Johannesburg Water

Approved By		
Drawn By R.ALVEY	Designed By M.SHERRATT	Reviewed By M.SHERRATT

Project

LINBRO PARK TOWER
(AND ASSOCIATED WORKS)
CP DESIGN

Description
<p align="center">CONTINUITY BONDING AT PIPELINE VALVE CHAMBERS</p>

Scale	AS SHOWN	Date	2023/02/1
-------	----------	------	-----------

Drawing No. PES-PEP0221-CP-005 / 0